

URBAN AGE ELECTRIC CITY CONFERENCE

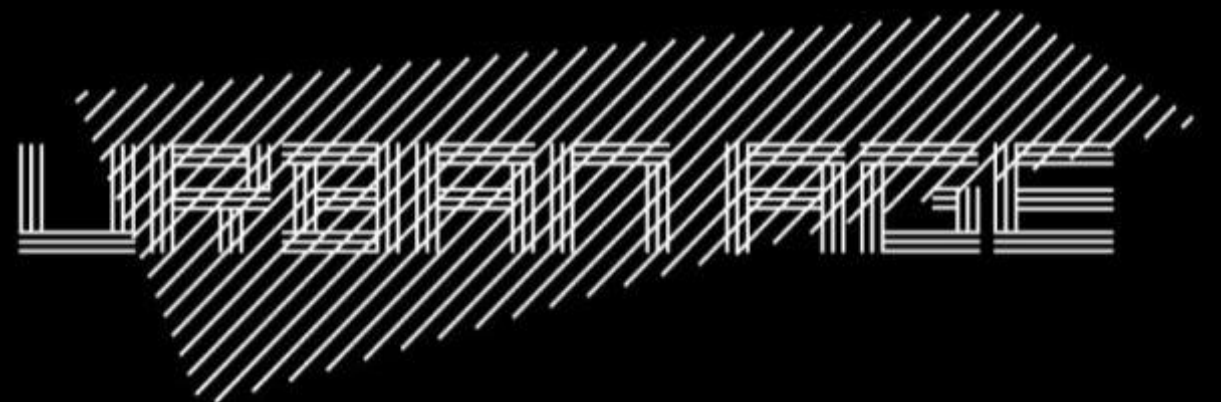
DECEMBER 2012

Kent Larson

MIT Media Lab

Intelligent dwelling

All rights are reserved by the presenter
www.lsecities.net



Electric City

Urban Age London

Intelligent Dwelling

Kent Larson

Director, City Science Initiative

MIT Media Lab







裝修·鋼琴·小房車
TEL: 5011000 全職



The Boston Globe

Menino pushes micro-units to lure young to Waterfront







the *Atlantic*

The Cheapest Generation

Why Millennials aren't buying cars or houses, and what that means for the economy

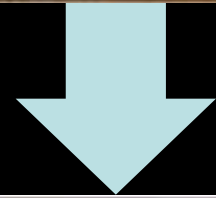


“Since the end of World War II, new cars and suburban houses have powered the world’s largest economy and propelled our most impressive recoveries.....Millennials may have lost interest in both.”

Space-on-Demand

(living)

Open Loft "Chassis"



Infill A



Infill B

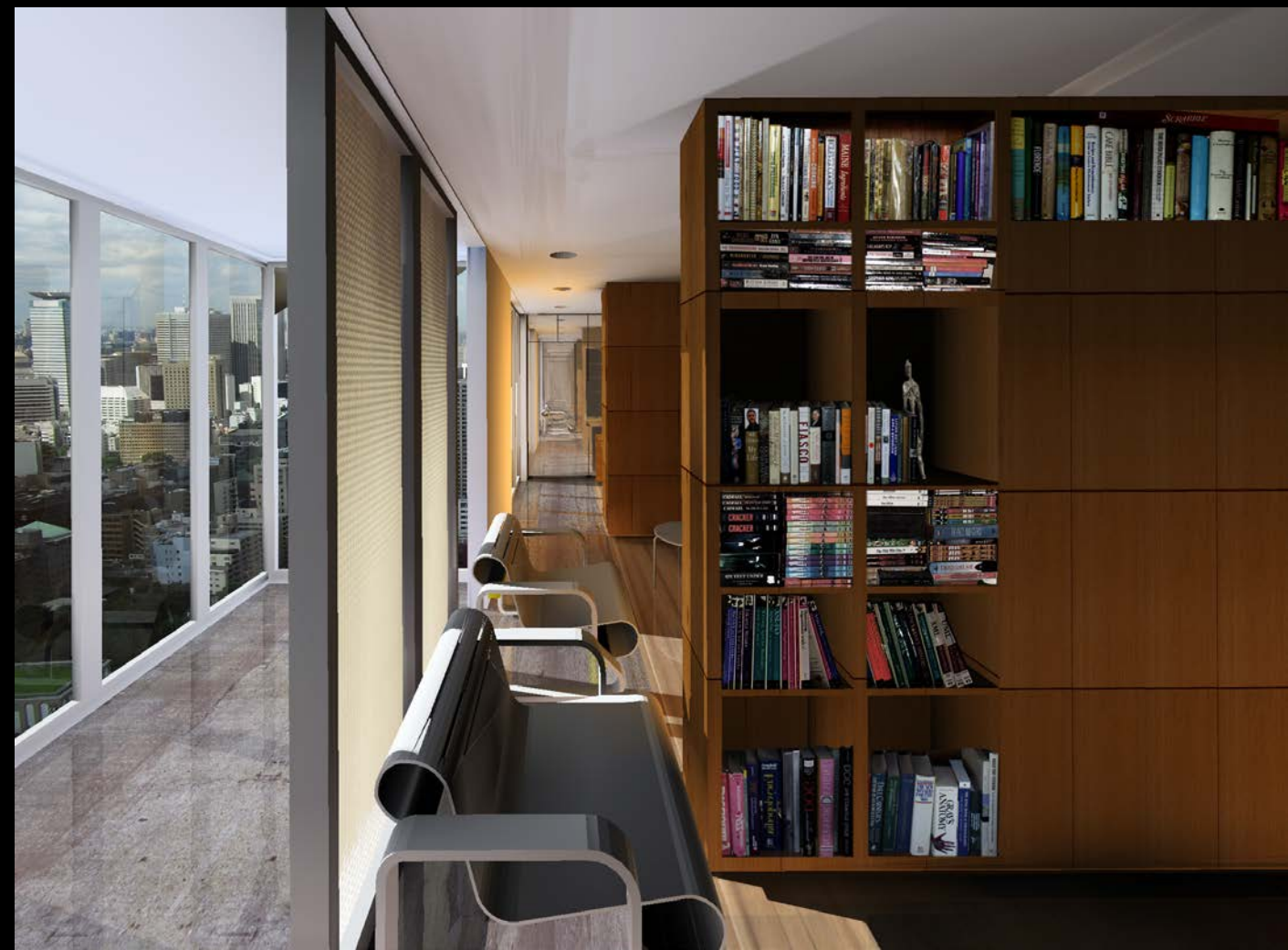
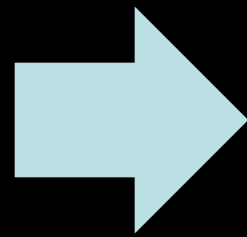


Infill C



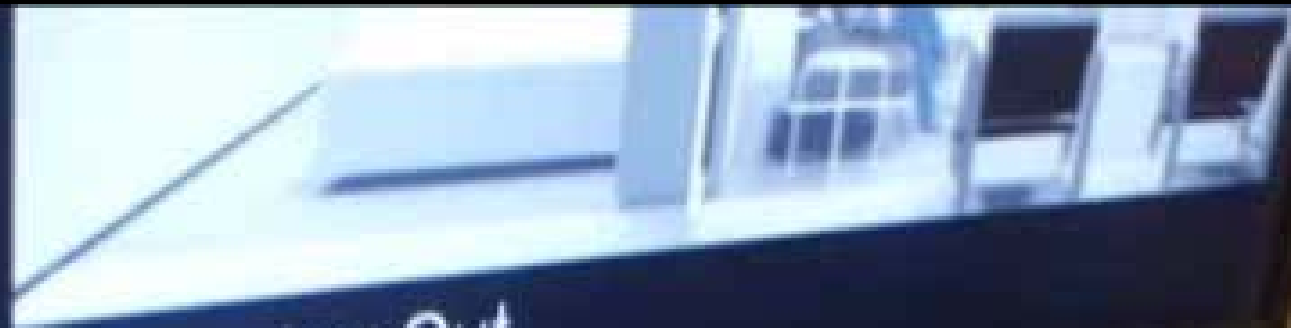


Browsing Housing Articles and Collecting Information

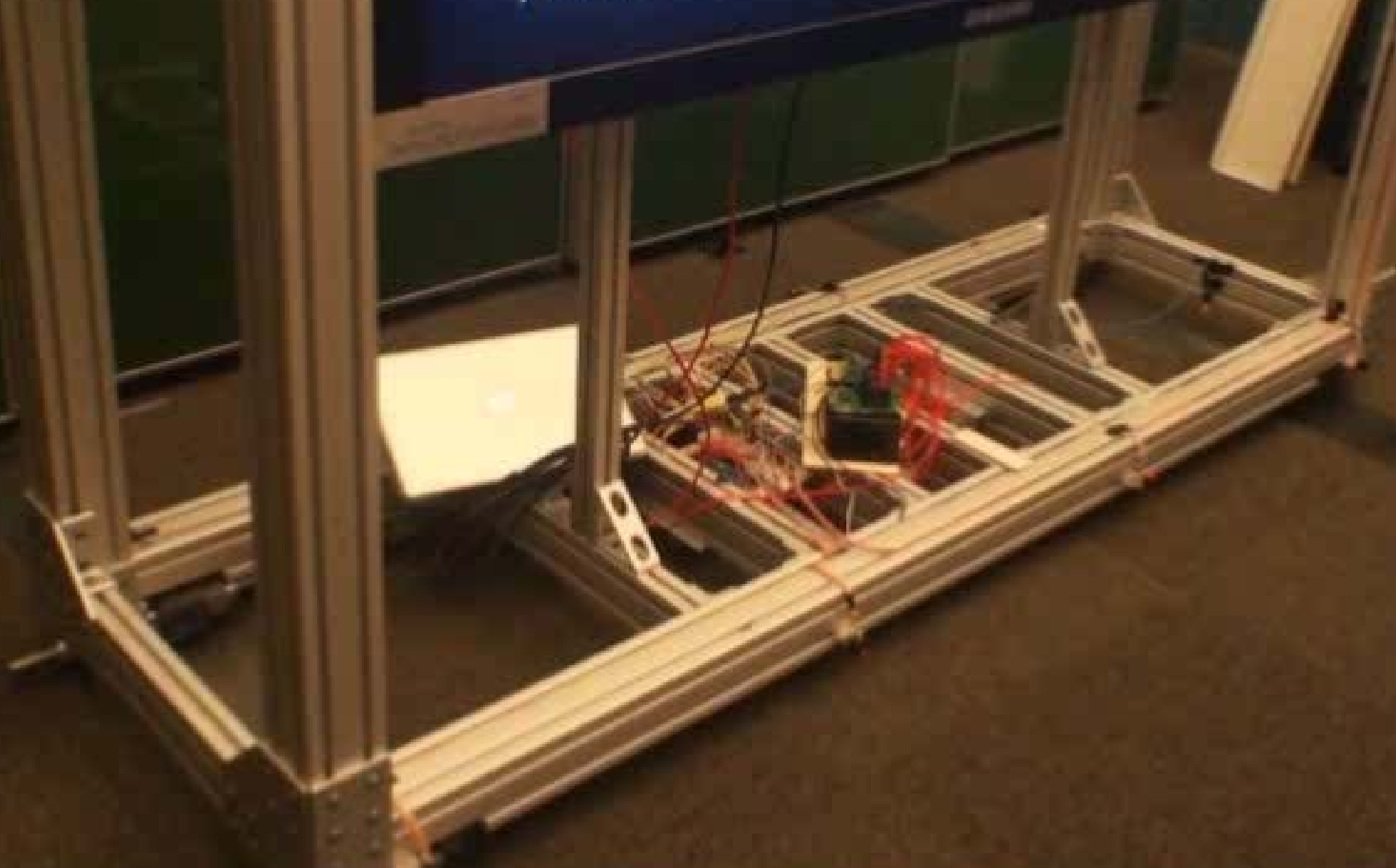


Transformable CityHome





Hanging Out



Space-on-Demand

(working)

- Shared cafes



Shared desks



Shared shop



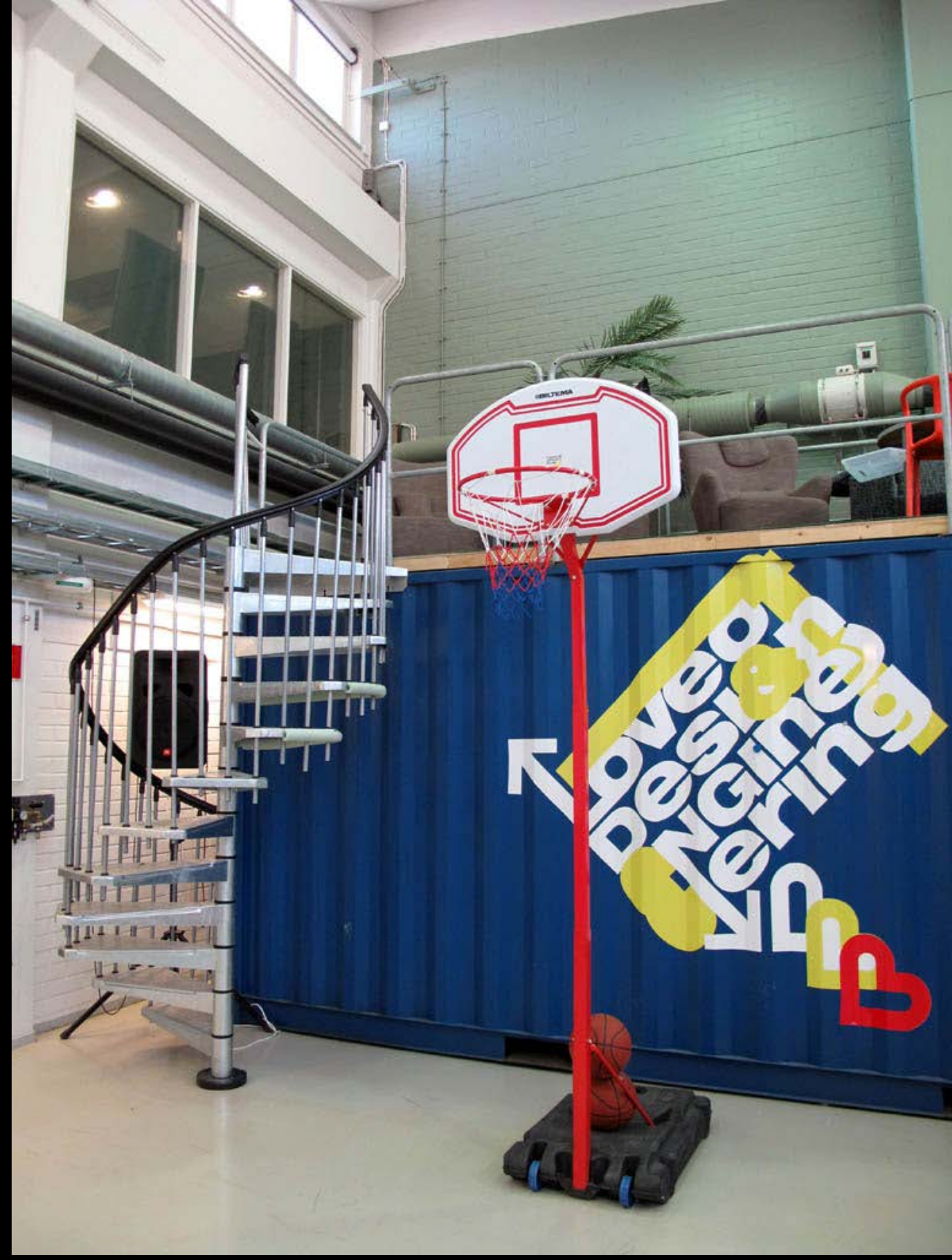
Shared fab-lab



Shared electronics lab



Shared recreation

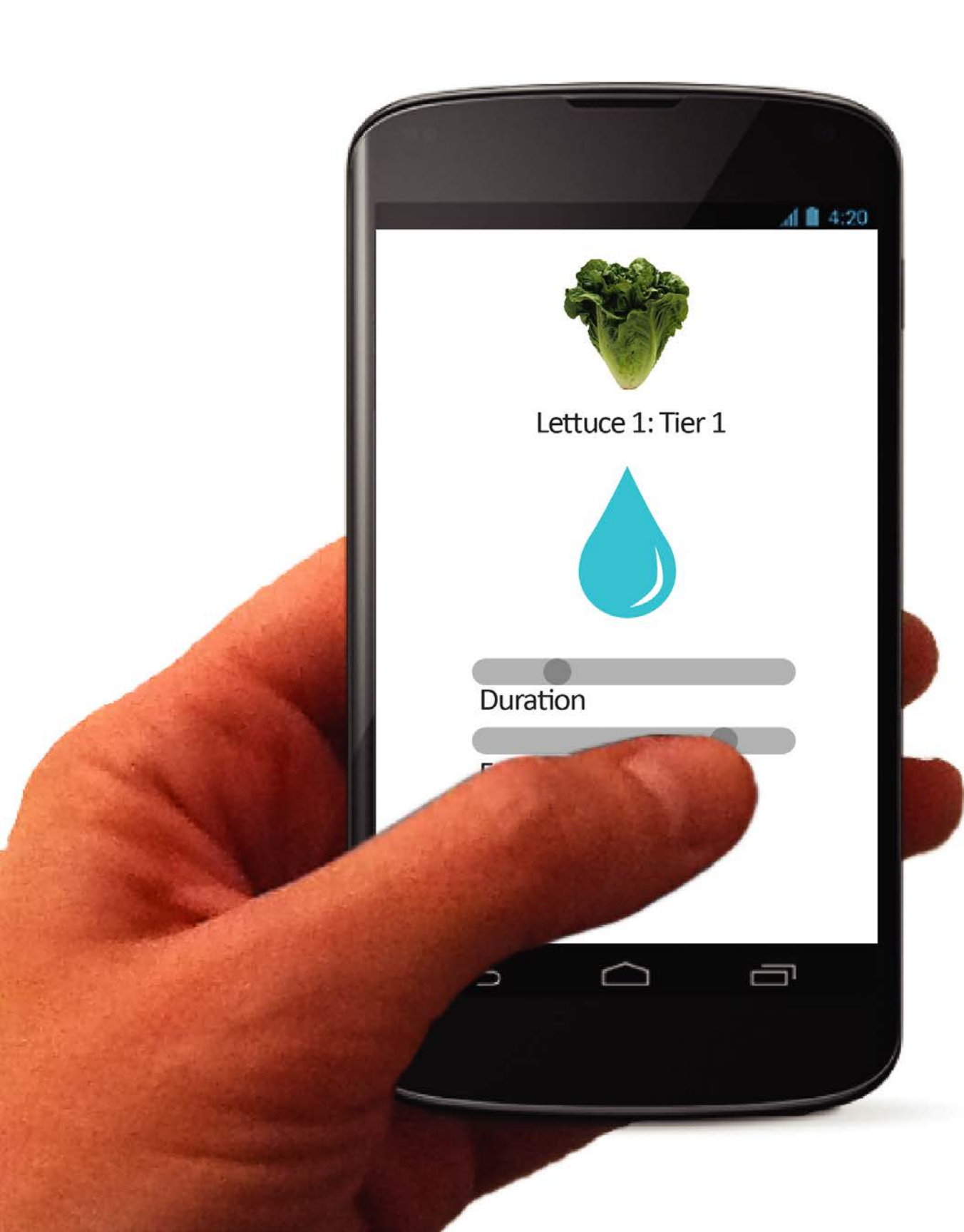


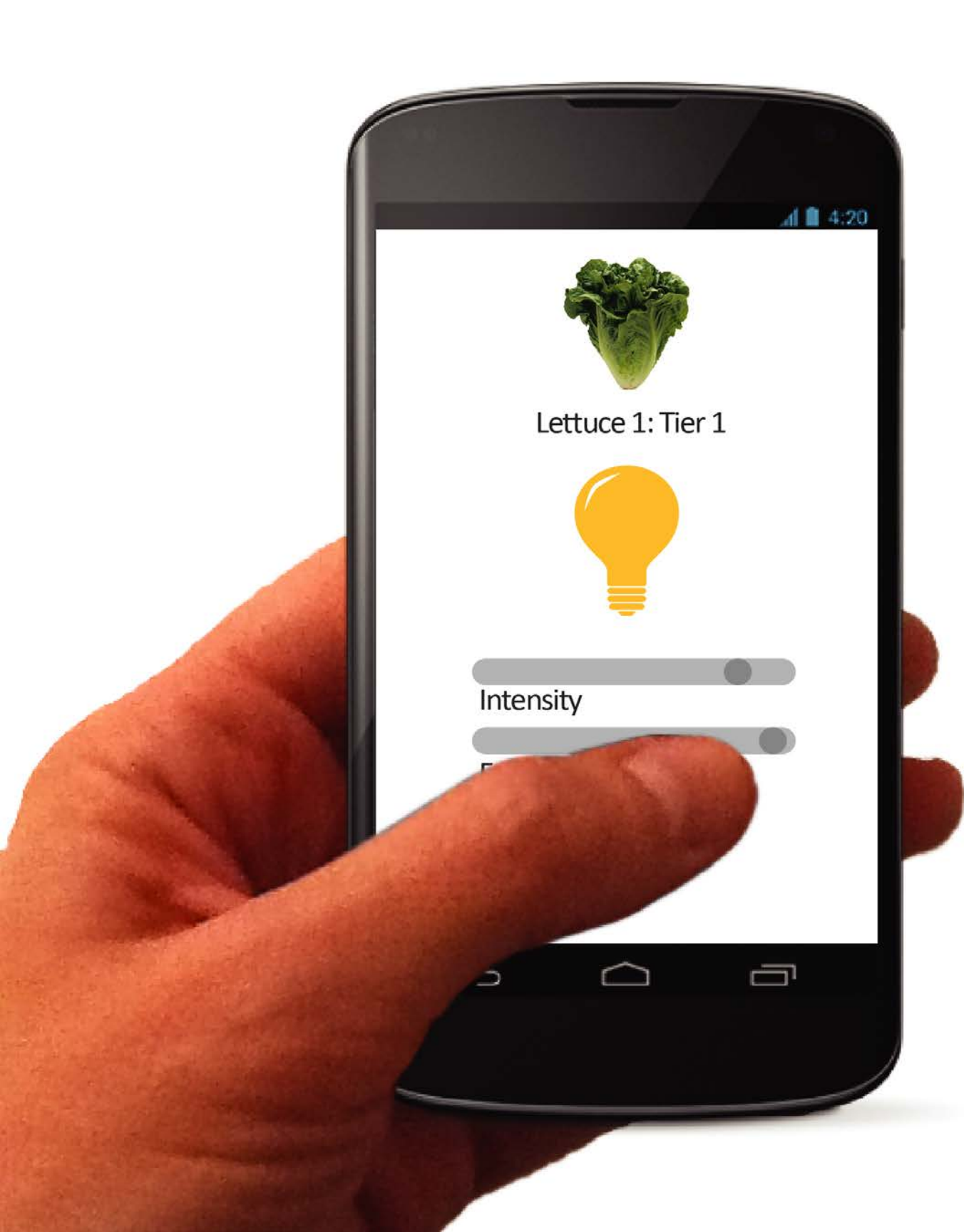
Technology-on-Demand



Food-on-Demand

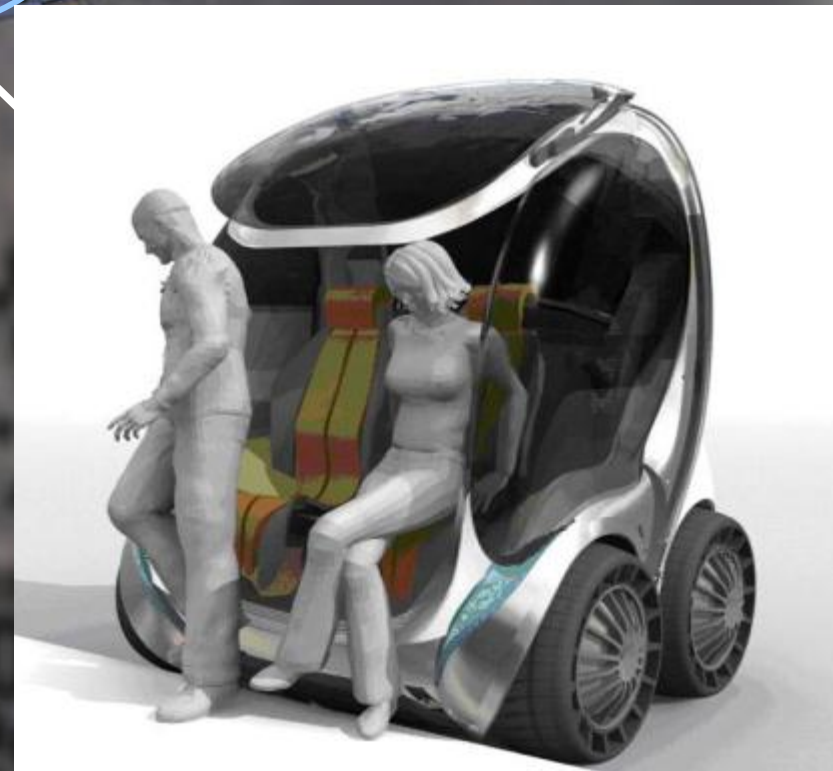






Learning-on-Demand

Mobility-on-Demand

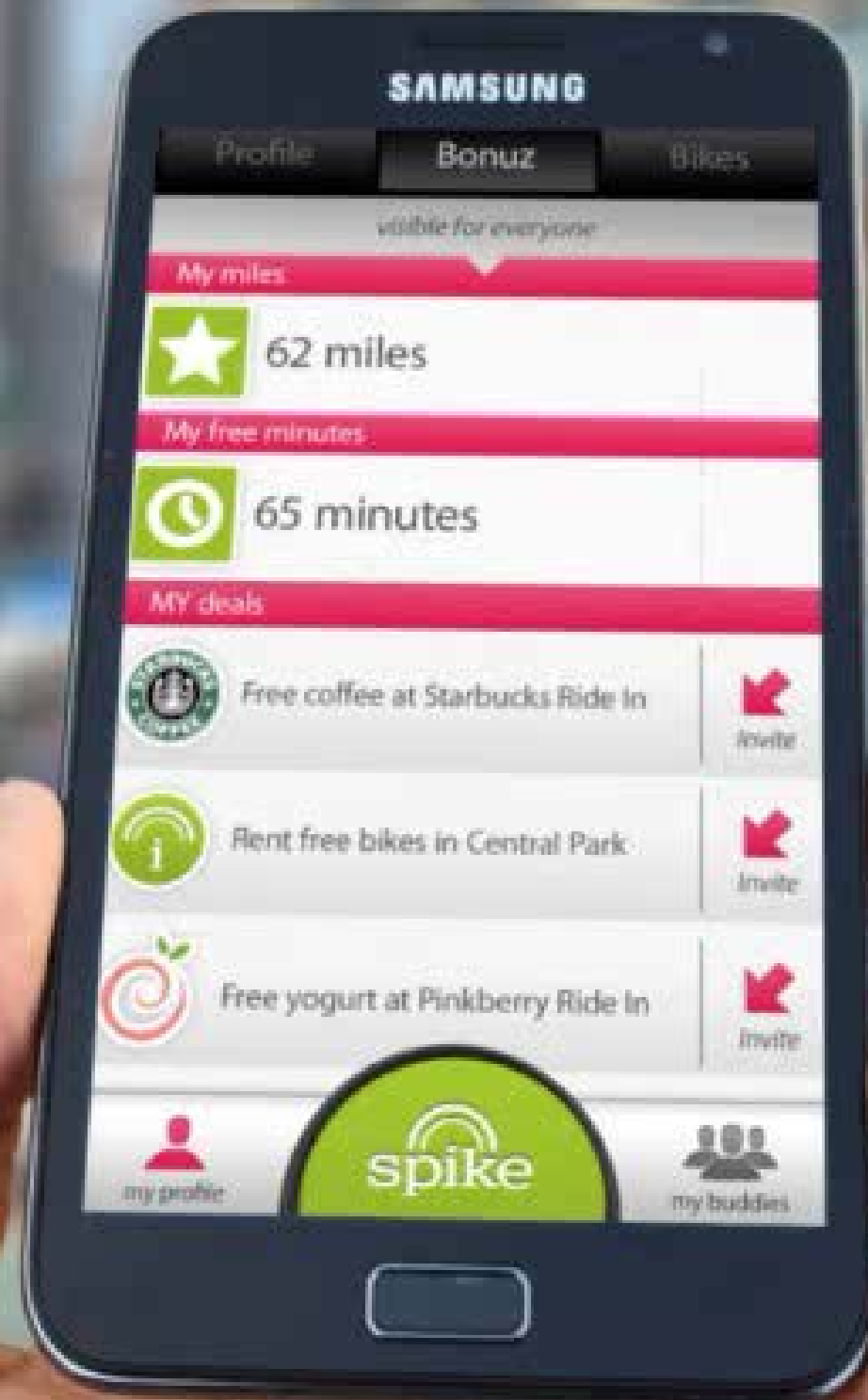


Shared-Use: 20X Utilization

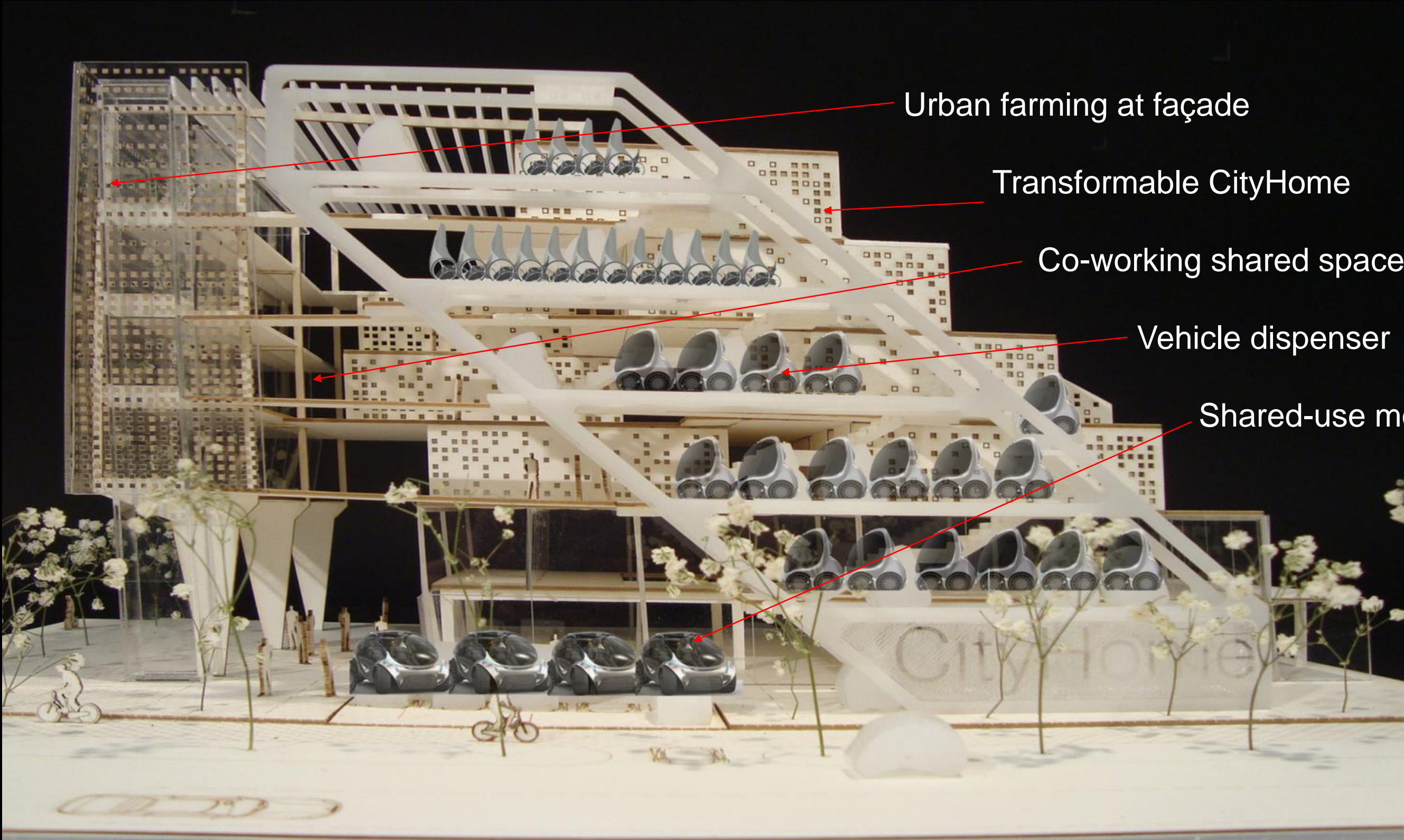




Spike is a social biking application.



On-Demand Living/Working/Mobility Ecosystem



Urban farming at façade

Transformable CityHome

Co-working shared space

Vehicle dispenser

Shared-use mobility hub

Electric City

Urban Age London

Intelligent Dwelling

Kent Larson

Director, City Science Initiative

MIT Media Lab

